



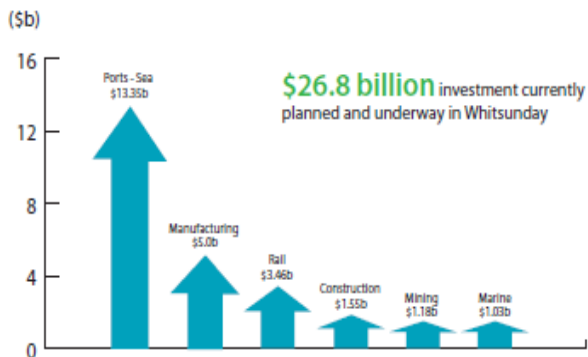
**Gateway to the Whitsundays & Coalfields**

## Regional Introduction

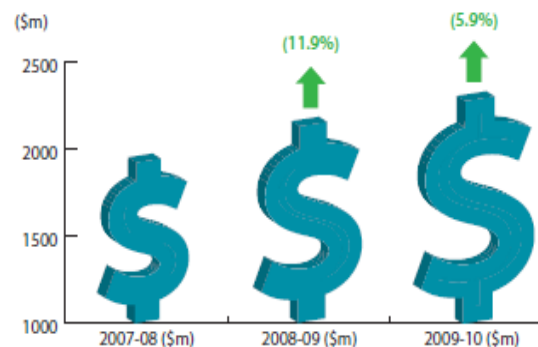
The Whitsunday Region is located midway along Australia's Queensland Coast, approximately 1125 kms North of Brisbane and 725 kms South of Cairns. The region encompasses the townships of Bowen, Cannonvale, Proserpine, Airlie Beach, Collinsville and Whitsunday Islands as well as smaller Beach and Hinterland settlements. The region is quickly developing via a diverse economy with a population of 38 000 and is fast becoming a destination of choice for investors, industry and lifestyle living. The region's size is similar to Belgium and it's diverse economic base is ensuring continued growth the key economic drivers include:

- An internationally recognised and expanding mining industry, with the Abbott Point coal loading facility set to become the largest coal port in the world
- A well developed and diverse manufacturing sector that includes a broad range of companies providing infrastructure support to the mining and construction industry.
- A wide range of agricultural industries including beef, sugar, aquaculture, fruit and vegetable crops
- A world renowned tourism industry showcasing one of Australia's iconic tourism destination

### INVESTMENT

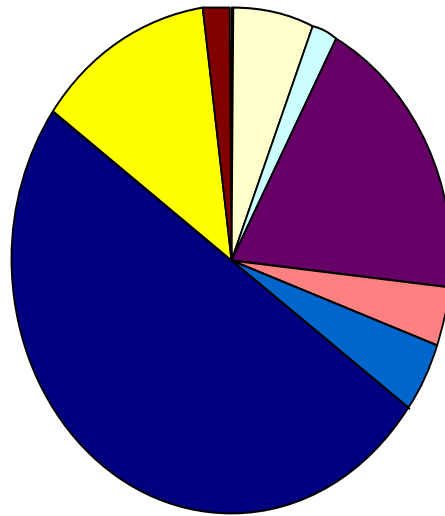


### GROSS REGIONAL PRODUCT, 2008-2010



# Regional Introduction – major development projects by sector

Whitsunday Region Major Development Projects current and planned by sector  
total value \$26.8 Billion



- |                |                            |                |              |                         |
|----------------|----------------------------|----------------|--------------|-------------------------|
| ■ Agribusiness | ■ Community Infrastructure | ■ Construction | ■ Energy     | ■ Manufacturing         |
| ■ Marine       | ■ Mining                   | ■ Port - Air   | ■ Port - Sea | ■ Professional Services |
| ■ Rail         | ■ Road                     | ■ Tourism      | ■ Water      |                         |

Industry Sector	\$ Value Per Sector in M
Agribusiness	\$40m
Community Infrastructure	\$46.6m
Construction	\$1551.2m
Energy	\$500m
Manufacturing	\$5000m
Marine	\$1030m
Mining	\$1277m
Port - Air	\$9m
Port - Sea	\$13350m
Professional Services	\$4.1m
Rail	\$3455m
Road	\$24.8m
Tourism	\$13.8m
Water	\$510.2m

## Whitsundays – Perfectly Placed !

As a region of choice for international and domestic visitors, the Whitsunday region's proximity to the booming Bowen Basin and soon to be developed Galilee Basin is an attractive choice for families to relocate.

The region is home to 74 islands and is surrounded by one of the world's seven natural wonders, the Great Barrier Reef. This coupled with substantial national parkland, providing a vital life support system for ancient rainforests and exotic wildlife, creates a natural sanctuary for new residents to immerse themselves. Furthermore land affordability and housing availability provide opportunities for all levels of property buyers.

With a lifestyle the envy of many and growing services industry, the Whitsunday region has positioned itself as an affordable, family friendly, lifestyle location that really does have it all.



# Strategic and Operational Plan – adopted by WRC 9/11/11

## Whitsunday Coast Airport Operational Objective

To provide the residents of the Whitsunday region with a world class aviation facility focused on the future. With the key priority for long term growth of the airport into a commercial aviation precinct integrated into a road, rail, air transport and logistics hub. Built on the pillars of safety, sustainability and security.

## Strategic Plan for growth

To ensure measured and sustainable growth the development of a 3 year Strategic and Operational Plan, in-conjunction with all stakeholders, will take primary place as the overarching document governing business development and aviation growth.

The purpose of the Strategic Plan is to allow the facility to reach it's full potential providing the community with a world class piece of infrastructure providing regional economic benefits to support WRC, the Tourism Industry, the broader economy and community.

## Strategic Priorities

Strategic Priority 1 – Airline Attraction

Strategic Priority 2 – FIFO / Charter growth and attraction

Strategic Priority 3 – Ancillary Revenue Streams

Strategic Priority 4 – Destinational Awareness / Marketing

Strategic Priority 5 – Aviation support / Education / Freight facilities / Green Corridor

Strategic Priority 6 – Airfield Operations



## Whitsunday Coast Airport - redevelopment

The Whitsunday Coast Airport services a significant range of air traffic from all phases of commercial, public and private enterprises; however the bulk of passenger traffic is generated by the daily Virgin Australia and Jetstar Airways flights from Brisbane.

The current terminal facility caters for in excess of 200 000 passengers per annum and the runway length of over 2073m is the longest in the region, with room for further growth to in excess of 3000m. The facility currently has the capacity to service aircraft up to 767 - 300 ER / A330 - 300 size.

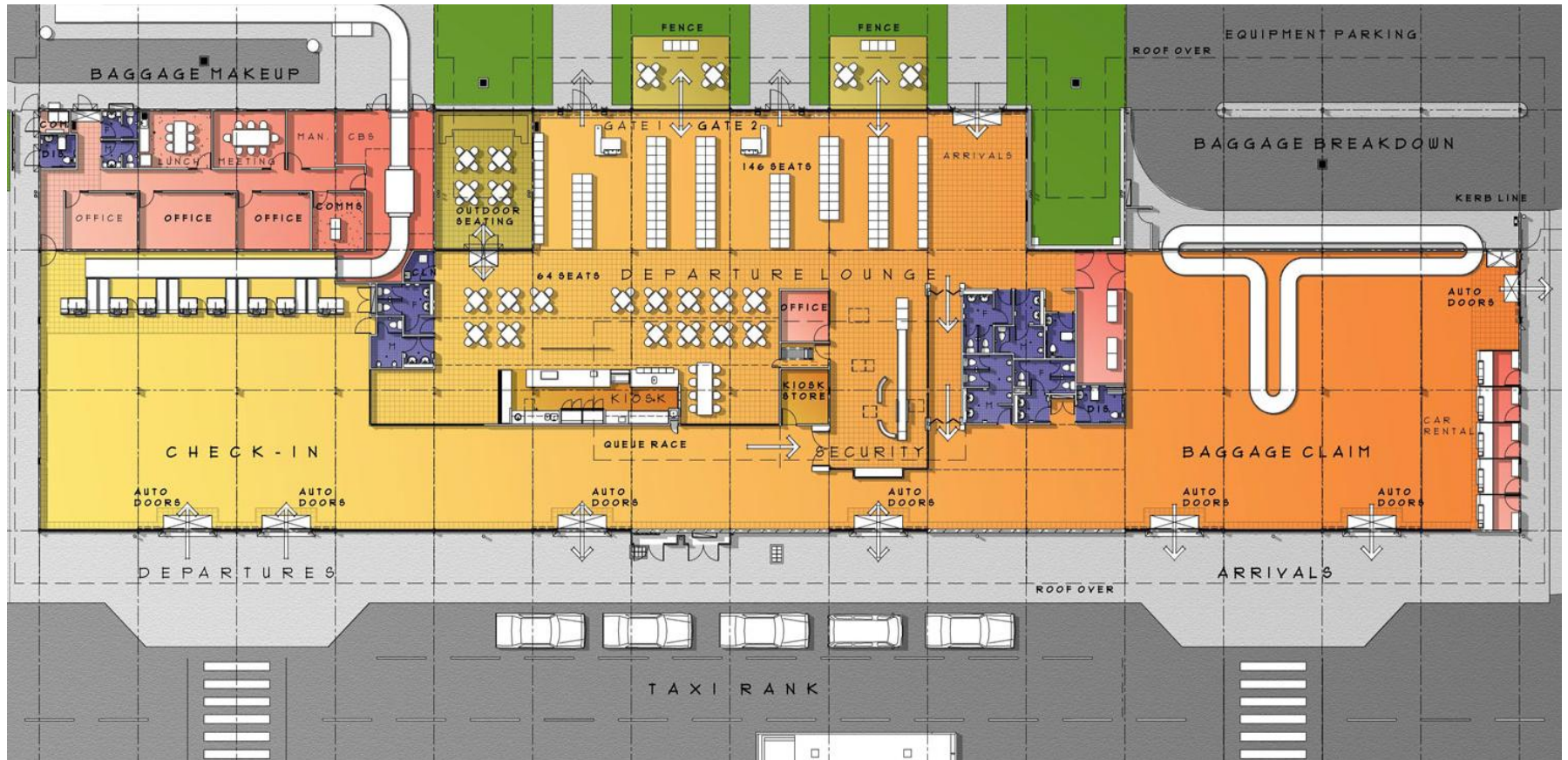
The Queensland State Government in-conjunction with airport operators Whitsunday Regional Council are currently completing a near \$9M upgrade of the terminal and car parking facilities.

The key features of the upgrade include:

- Enhanced departure lounge and baggage claim inclusive of common user check in facilities and gates
- New baggage claim facilities inside the terminal
- Revised passenger facilities
- Relocated and refurbished airport offices
- Customs and quarantine facilities for potential international services in the future
- New car parking facilities, pick up and drop off, bus and taxi facilities



# Terminal Redevelopment and Airport Overview





Whitsunday Surveyors  
ACN 010 882 210  
SURVEYORS  
TOWN PLANNERS  
Developing Opportunities

BOWEN Ph: (07) 4786 1050  
MACKAY Ph: (07) 4951 2911  
PROSERPINE Ph: (07) 4945 1722  
WHITSUNDAY  
email: [wsjsg@wsjsg.com.au](mailto:wsjsg@wsjsg.com.au)  
web site: [www.wsjsg.com.au](http://www.wsjsg.com.au)

Client:  
**WHITSUNDAY REGIONAL COUNCIL**  
Project:  
**WHITSUNDAY COAST AIRPORT**

TITLE:  
**MACRO VIEW OF THE AIRPORT FACILITIES WITHIN LOT 50 ON HR905298**

Scale: 1:5000 (A1 Size)  
Locality: LASELLE'S AVUE  
Local Authority: W.R.C.

Rev. No.	Revisions
A	As Issued
B	As Issued
C	
D	
E	

Notes:

Vert. Datum	SLM
State	QLD
Scale	As Shown
Contract	
Drawn	
Checked	

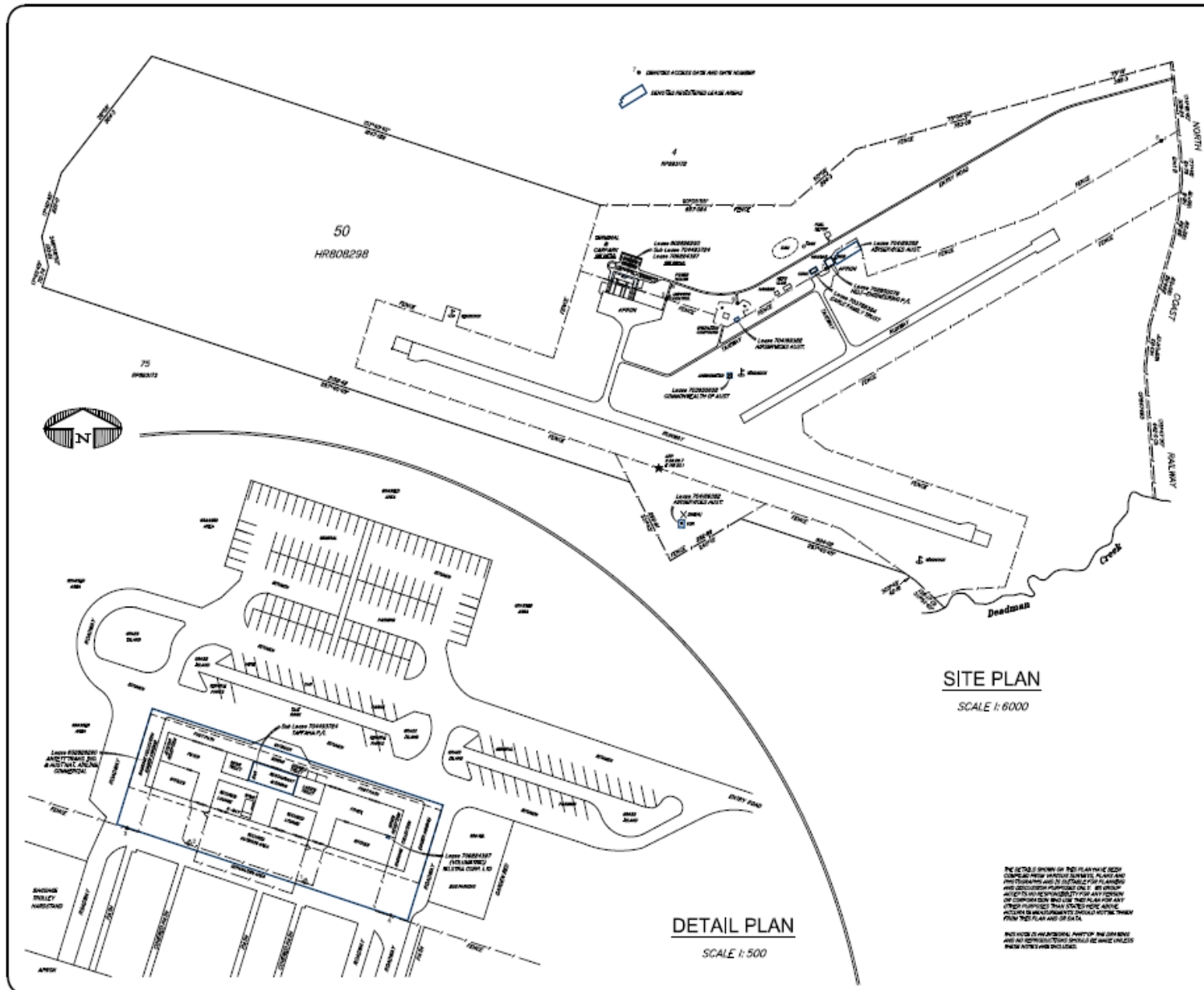
© COPYRIGHT  
The design and details herein are the property of Whitsunday Surveyors Pty Ltd and may not be copied in any way without prior written approval from this company.

The liability of this title block contains the design and drafting of this project from issue prepared and checked in accordance with the AS 1904 (2005) standards.

Drawn	DF	08/08
Approved	[Signature]	08 Aug 2008

Date Plot: 13680S01.dwg

Plotting Number:  
**13680S01**



**SITE PLAN**  
SCALE 1: 6000

**DETAIL PLAN**  
SCALE 1: 500

THIS TITLE DRAWN ON THE PLAN HAS BEEN CHECKED AND APPROVED FOR PUBLICATION AND FOR THE PURPOSES OF THE COMPASSION AND DISCRETION OF THE COMPASSION AND DISCRETION OF ANY PERSONS OTHER THAN THE SURVEYOR. THE SURVEYOR'S ACTION IS LIMITED TO THE DESIGN AND DRAFTING OF THIS PROJECT FROM ISSUE PREPARED AND CHECKED IN ACCORDANCE WITH THE AS 1904 (2005) STANDARDS.

THIS TITLE IS AN ORIGINAL PART OF THE SURVEY AND ALL INFORMATION CONTAINED HEREIN IS UNLESS OTHERWISE INDICATED BY THIS TITLE AND IS NOT TO BE REPRODUCED OR TRANSMITTED IN ANY FORM OR BY ANY MEANS, ELECTRONIC OR MECHANICAL, INCLUDING PHOTOCOPYING, RECORDING, OR BY ANY INFORMATION STORAGE AND RETRIEVAL SYSTEM, WITHOUT THE WRITTEN PERMISSION OF THE SURVEYOR.

## Whitsunday Coast Airport Flight Analysis

May – Oct 2011; in excess of 110 000 pax through the airport with only 2 flights per day

Total average combined inbound and outbound load factor for last 6 months May – Oct 2011; 85% on BNE – PPP – BNE route ; Oct best month of 2011 over 19 500 pax through airport

Expansion is required to facilitate regional growth across a number of routes not just BNE with in excess of 60 000 pax leaking to other regional airports per annum

Both Virgin Australia and Jetstar Airways providing daily jet services ex Whitsunday Coast Airport to Brisbane



DJ 1117 BNE 1140 – PPP 1320 (Daily services)

DJ 1118 PPP 1355 – BNE 1520 (Daily services)

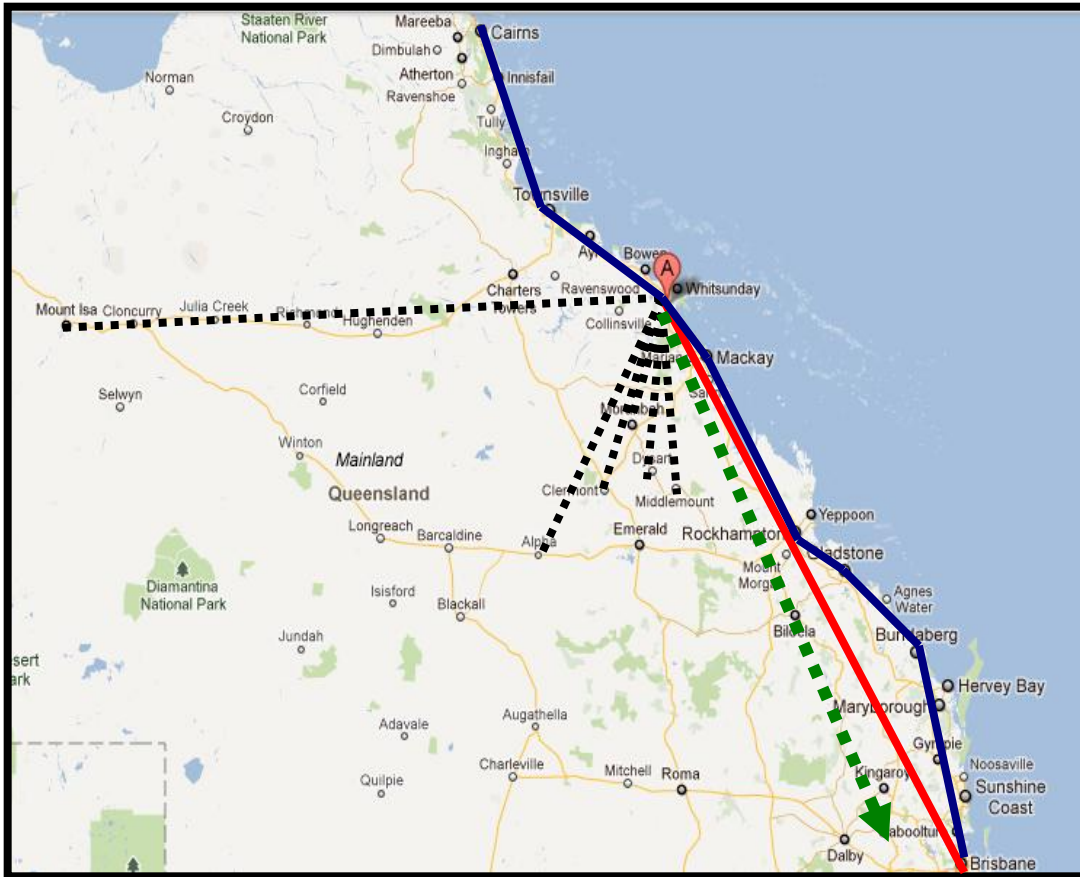


JQ 830 BNE 0840 – PPP 1020 (Daily services)

JQ 833 PPP 1050 – BNE 1220 (Daily services)



# Whitsunday Coast Airport – Priority Route Map, current and future development opportunities: QLD Coast, RPT, Charter and FIFO



- Current BNE services ———
- FIFO opportunities current and future - - - - -
- QLD COAST ———
- Potential Domestic RPT Opportunities - - - - ->

## QLD Coastal

Review current and future opportunities

### Daily BNE direct services

DJ/JQ middle of day schedule – leisure focus

Requirement of overnight service – corporate focus

Require evening service – corporate focus

Review Cargo potential

### FIFO opportunities current and future

One way flight times vs one way DIDO

Flight times based on turbo prop a/craft cruising speed of 450 – 500km/h

Moranbah; 20 – 30 mins / DIDO – 3hr 30 mins to 4 hrs

Dysart; 30 – 40 mins / DIDO – 4 hr to 4 hr 30 mins

Middlemount; 30 – 40 mins / DIDO – 5hr to 5 hr 30 mins

Clermont; 35 – 45 mins / DIDO – 4 hr 30 mins to 5 hr

Alpha; 45 – 55 mins / DIDO – 7 hr 30 mins to 8 hr

Mount Isa; 1 hr 50 mins turbo prop / 1 hr 10 mins jet (800km/h cruise)

### Potential Domestic and International RPT and Charter Opportunities

RPT – SYD / MEL / AVV; leisure market, also potential for seasonal services

Review Cargo potential







## **Opportunities**

The Whitsunday Coast Airport is located on Sir Reginald Ansett Drive, 14 kms South of Proserpine. Being the best positioned airport to Airlie Beach and the Whitsunday Islands the airport is an important gateway to an emerging regional economic powerhouse.

The airport site encompasses an area of 430.43 hectares with all structures and associated runway areas above flood levels. Future development of the airport site is planned due to it's unique positioning, as the only commercial airport on the East Coast of Australia not currently constrained by previous development either industrial or residential and is within the realms of a greenfield site.

Furthermore the airport's positioning to the North-South Coastal Railway line, Bruce Highway and future scope for growth has created an opportunity to development an integrated transport and logistics hub servicing a wide range of transport providers and warehousing options.

**For More information contact:**

**Scott Waters – General Manager Business Development**

**m: 0417 783 680 / e: [Scott.Waters@whitsundayrc.qld.gov.au](mailto:Scott.Waters@whitsundayrc.qld.gov.au)**