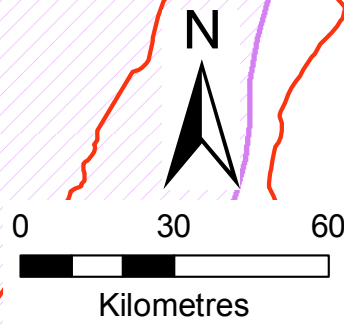
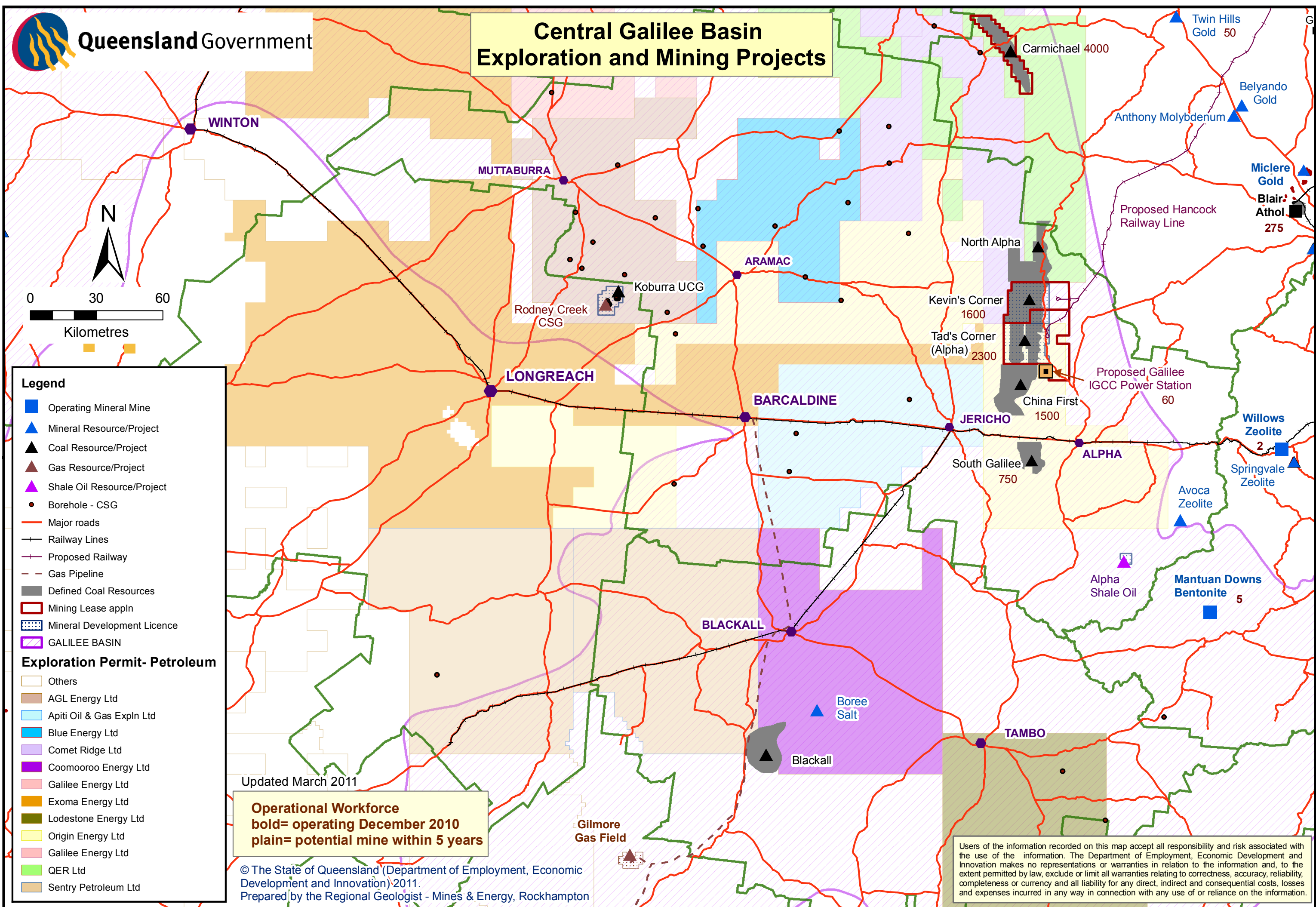


Central Galilee Basin Exploration and Mining Projects



Legend

- Operating Mineral Mine
- ▲ Mineral Resource/Project
- ▲ Coal Resource/Project
- ▲ Gas Resource/Project
- ▲ Shale Oil Resource/Project
- Borehole - CSG
- Major roads
- Railway Lines
- - Proposed Railway
- - Gas Pipeline
- Defined Coal Resources
- ▭ Mining Lease appln
- ▭ Mineral Development Licence
- ▭ GALILEE BASIN

Exploration Permit- Petroleum

- ▭ Others
- ▭ AGL Energy Ltd
- ▭ Apiti Oil & Gas Expln Ltd
- ▭ Blue Energy Ltd
- ▭ Comet Ridge Ltd
- ▭ Coomooroo Energy Ltd
- ▭ Galilee Energy Ltd
- ▭ Exoma Energy Ltd
- ▭ Lodestone Energy Ltd
- ▭ Origin Energy Ltd
- ▭ Galilee Energy Ltd
- ▭ QER Ltd
- ▭ Sentry Petroleum Ltd

Updated March 2011

Operational Workforce
bold= operating December 2010
plain= potential mine within 5 years

© The State of Queensland (Department of Employment, Economic Development and Innovation) 2011.
 Prepared by the Regional Geologist - Mines & Energy, Rockhampton

Users of the information recorded on this map accept all responsibility and risk associated with the use of the information. The Department of Employment, Economic Development and Innovation makes no representations or warranties in relation to the information and, to the extent permitted by law, exclude or limit all warranties relating to correctness, accuracy, reliability, completeness or currency and all liability for any direct, indirect and consequential costs, losses and expenses incurred in any way in connection with any use of or reliance on the information.